



Marie O'Connor

778.321.0091
marie@marieoconnor.ca
www.marieoconnor.ca

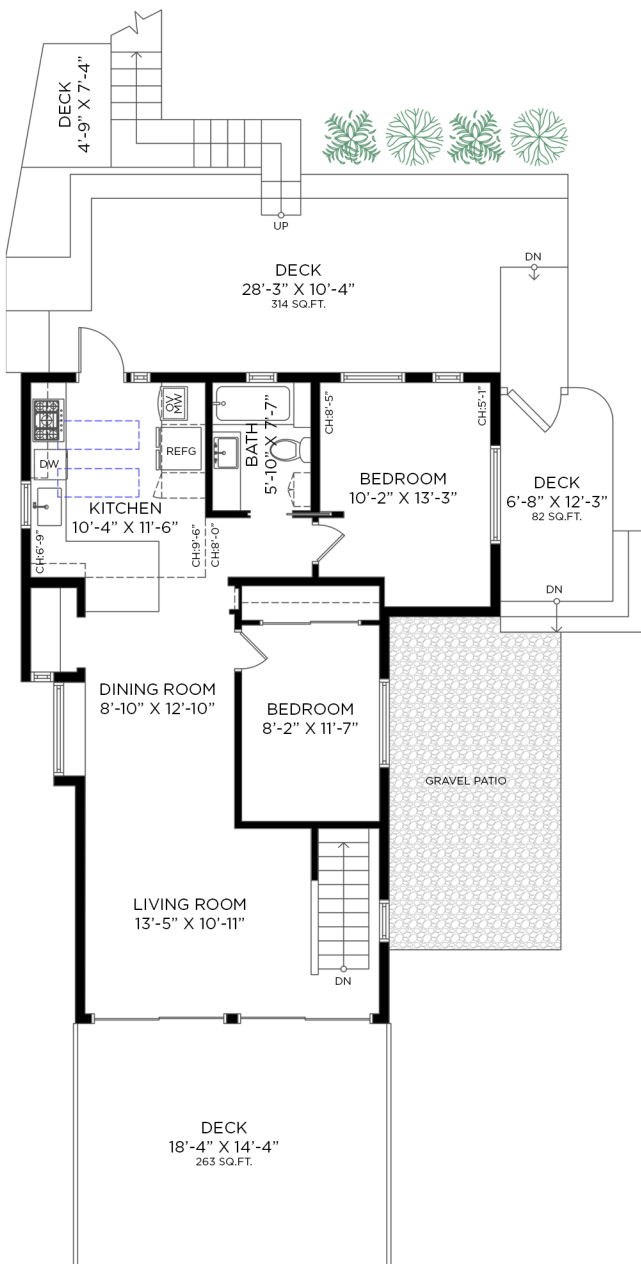
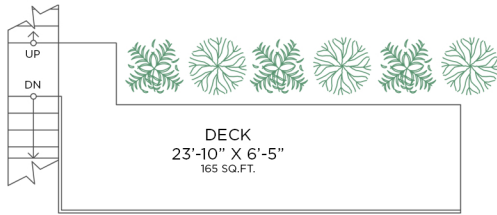
1938 CLIFFWOOD RD NORTH VANCOUVER, BC

3 BEDROOMS + 2 1/2 BATHROOMS

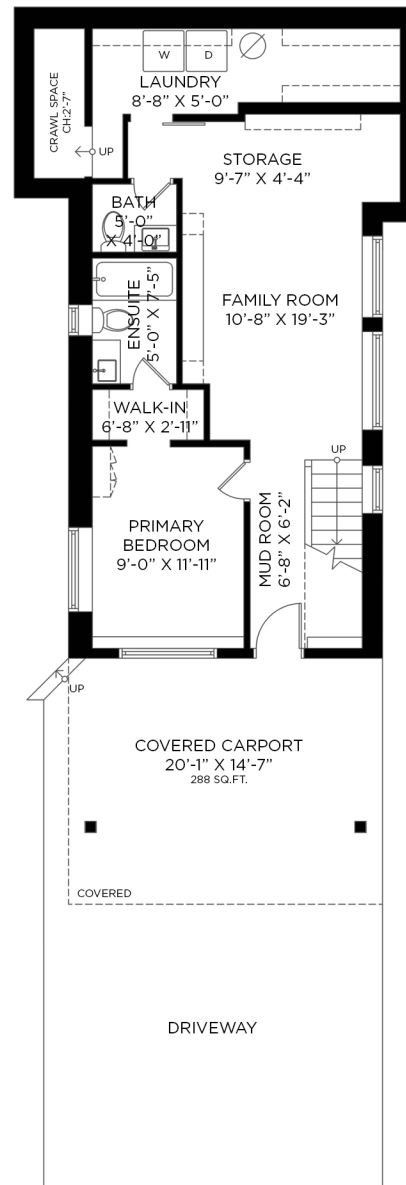
MAIN FLOOR - 880 SQ.FT.
CEILING HEIGHT: 5'-1" TO 9'-6"

MAIN FLOOR: 880 SQ.FT.
LOWER FLOOR: 746 SQ.FT.
TOTAL INTERIOR: 1,626 SQ.FT.

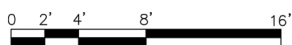
COVERED CARPORT: 288 SQ.FT.
EXTERIOR LIVING: 824 SQ.FT.
EXTERIOR STORAGE: 84 SQ.FT.



LOWER FLOOR - 746 SQ.FT.
CEILING HEIGHT: 6'-8"



ENTRANCE



Floor plan not suitable for architectural/construction purposes. ANSI Z765 stand used to calculate square footage. Buyer to verify. E&O insured for \$1,000,000.

